



Digital Combo

Heat Press

Operational Guide

Geni HeatPro Components



- | | | |
|--------------------------------------|-------------------------------------|--|
| 1 Mug Heater Band Attachments | 5 Plate Pressing Heater Pads | 9 Control Box |
| 2 Mug Press Handle | 6 Power Connector | 10 Heater Plate Attachment Screws |
| 3 Pressure Adjustment | 7 Press Clamp Handle | 11 Flatbed Press Plate |
| 4 Mug Press Attachment | 8 Pressure Adjustment Knob | 12 Cap Pressing Clamps |



Mug Press & Flatbed Press setup



Plate Press setup



Cap Pad Press setup

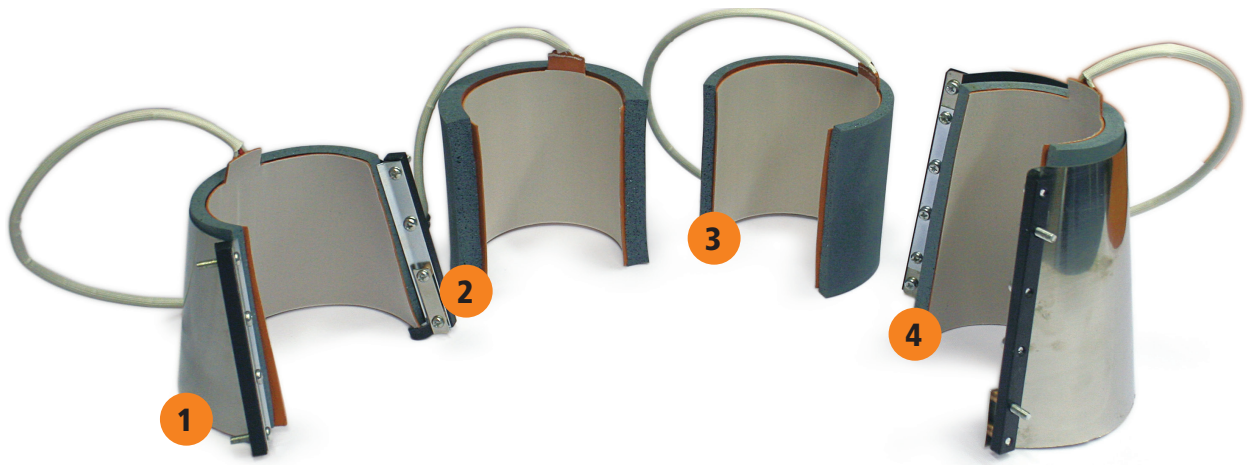
Geni HeatPro Specification

Description

The Geni HeatPro is the ultimate solution for businesses needing a versatile, short-run dye-sublimation system. The Digital Combo Heat Press allows the decoration of a wide range of products, from t-shirts through mugs and even baseball caps.

Accessories

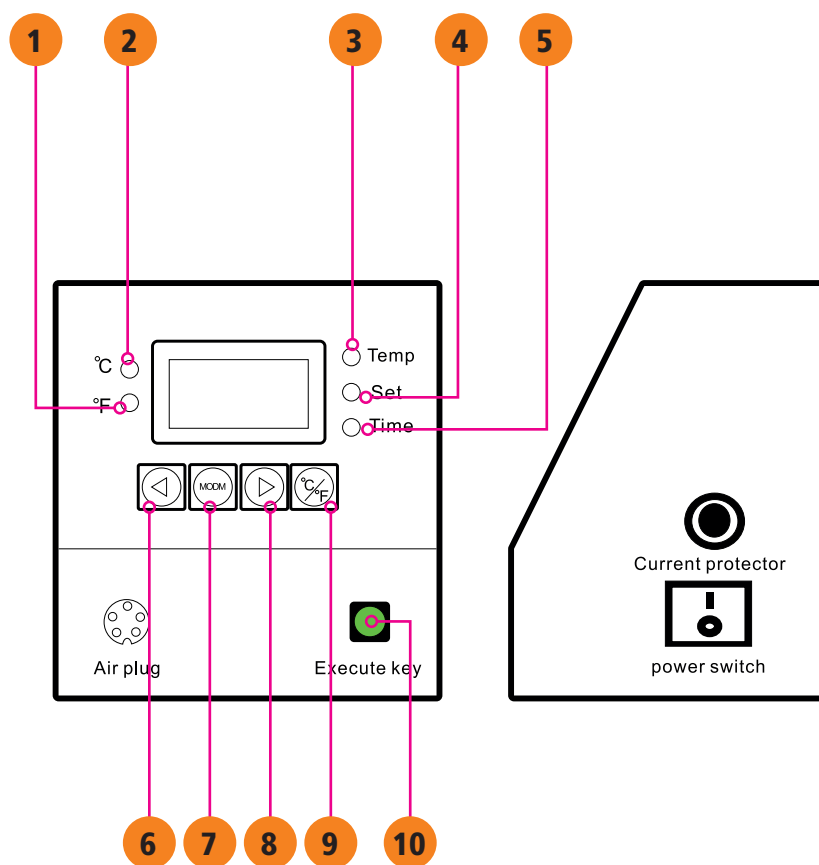
- 1 Small Latte 12 oz Heater Band
- 2 Slimline Heater Band (Windsor & Can Mugs)
- 3 Standard Durham Heater Band
- 4 Large Latte 17oz Heater Band



Control Panel Operation

Display Panel

- 1 The display shows the temperature in °F
- 2 The display shows the temperature in °C
- 3 When the TEMP indicator is lit the cooking temperature can be set
- 4 When the SET indicator is lit the idle temperature can be set
- 5 When the TIME indicator is lit the time can be set.
- 6 Is for deduction
- 7 Mode Button for Settings
- 8 Is for increase
- 9 Toggle °C / °F
- 10 Start/Stop Button



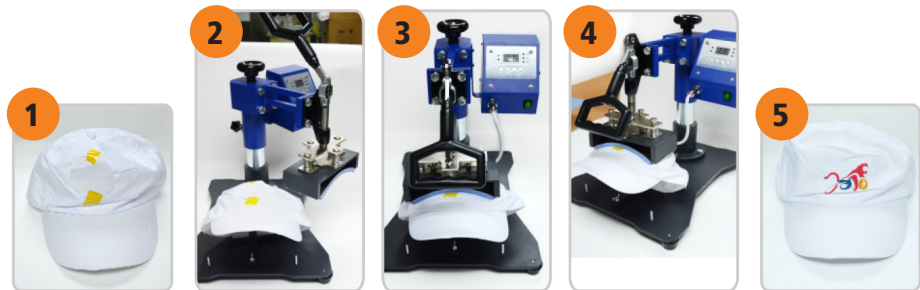
Programming the Control Unit

1. Connect power cable
2. Switch Machine on
3. Select either °C or °F for temperature display
4. To set the idle temperature (see above) press the mode button once. The 'set' light will illuminate allowing you to adjust the idle temperature using the plus and minus buttons. The idle temperature should be 10°C below the 'cook' temperature.
5. Press the mode button for the second time to set the 'Cook' temperature and the 'Set' and 'Temperature' light will illuminate. Adjust the cook temperature with the plus and minus button.
6. Press the mode button for the third time to set the sublimation time and the 'Time' light will illuminate. Adjust the sublimation time with the plus and minus button. Exit by pressing the mode button.
7. The machine starts automatically to heat up to the 'Idle' temperature. When this temperature has been reached the machine will start to beep.
8. To start the sublimation operation press the Start/Stop button once. The machine will first heat up to the cook temperature, when this has been reached the timer count down will start.
9. When the operation is finished, the machine will give a long beep. This can be stopped by pressing the Start/Stop button again.
10. To change a heater band always make sure that the power is switched off and wait until the machine has cooled. Unscrew the plug to release.

Please Note: The 'idle' temperature is always lower than the 'Cook' temperature. This means that when setting an 'Idle' temperature that exceeds the current 'Cook' temperature, the 'Cook' temperature should be set higher.

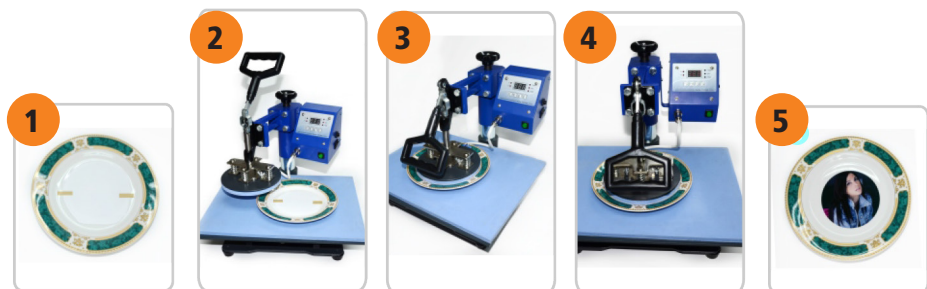
Geni HeatPro Operations

Cap Press



- 1 Print your design onto dye-sublimation paper to the required dimensions following the product template. Trim to required size and attach to the cap using heat tape.
- 2 Swivel the upper cap pad to the side and affix cap over bottom cap pad.
- 3 lower the hand lever and clamp and adjust the pressure - then disengage the clamp
- 4 Power on and set the temperature and time. Once the press has reached the programmed temperature lower the clamp and press the green Start/stop button.
- 5 When the machine buzzes, press the green Start/stop button and take out the cap. (Caution - product will be hot!)

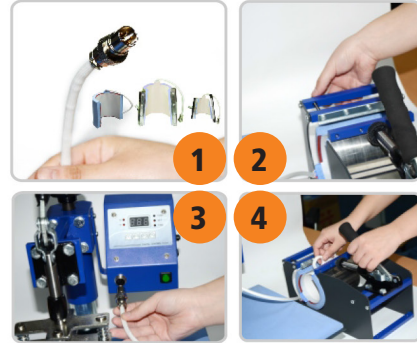
Plate Press



- 1 Print your design onto dye-sublimation paper to the required dimensions following the product template. Trim to required size and attach to the plate using heat tape.
- 2 Swivel the upper plate pad to the side and place plate on press bed.
- 3 lower the hand lever and clamp and adjust the pressure - then disengage the clamp
- 4 Power on and set the temperature and time. Once the press has reached the programmed temperature lower the clam and press the green Start/stop button.
- 5 When the machine buzzes, press the green Start/stop button and take out the plate. (Caution - product will be hot!)

Accessory Installation

Changing Accessories



Before changing heater bands make sure that the power is switched off and the machine is cool.

Changing heater bands;

- 1 Unscrew the connector.
- 2 Unplug the cable.
- 3 Do not fold or bend the heating mats
- 4 Remove the Heatband from the holder and replace it with another heater band.
- 5 Carefully connect the cable to the cable clamps; plug the cable into the control box. Screw in the connector.

Replacing Silicone Plate Mat



- 1 Power off the machine, loosen the 2 screws to top press plate and remove the currently installed heat mat/plate.
- 2 Affix the silicon plate mate
- 3 Connec/disconnect Plate Mat power connector from the accessory interface port of the control box.
- 4 Switch on power and test.

Dye-Sublimation FAQ

Q&A

Q: The transferred image is a little light

A: Start by lengthening the sublimation time. Second option is raising the temperature by 10°F. Alternatively add a little more pressure.

Q: The transferred image is a little vague

A: Reduce the sublimation time by 10 seconds

Q: The transferred image is not brilliant

A: Reduce the pressure or reduce the temperature

Q: The transferred image is partially blurred

A: The sublimation paper did not contact completely with the object. Usually this means that the surface of the object is not completely smooth.

Q: Sticking Papers

A: The temperature is too high or it is an indication of poor quality sublimation transfer paper.

Q: The edges of the mugs are brown in colour

A: Reduce the sublimation time by 20 seconds.

Warranty

We offer a warranty which covers the press and other equipment as long as it is free from defects in both material and workmanship for one year from the date of invoice for the buyer. For the usage parts of heat presses an overall warranty applies for 3 months from the date of invoice to the buyer.

The heat mat is guaranteed for 300 impressions or 3 months, whichever comes first. The usage parts are marked accordingly.

This warranty covers all parts to repair the defects, except when damage results from improper installation, accidents, misuse or abuse.

There are no warranties, which extend beyond the description on the face hereof. The seller disclaims any implied warranty of merchantability and / or implied warranty of fitness for a particular purpose and buyer agrees that the goods are sold as is. In no event will Listawood be liable for any consequential or indirect damages or indirect damages arising from the use of the press or accompanying materials

Multi-Mug Heat Press, HPM12001

1 year return to base warranty. Except usage parts (mug mats): 3 month warranty or 300 impressions.

